

EFFC - European Federation of Foundation Contractors

WORKING PLATFORM SAFETY

EFFC Talk



Lorenzo Alessi

EFFC H&S Working Group Chair

Simon Jones

EFFC H&S Working Group Member



What is a Working Platform?

What is a Working Platform

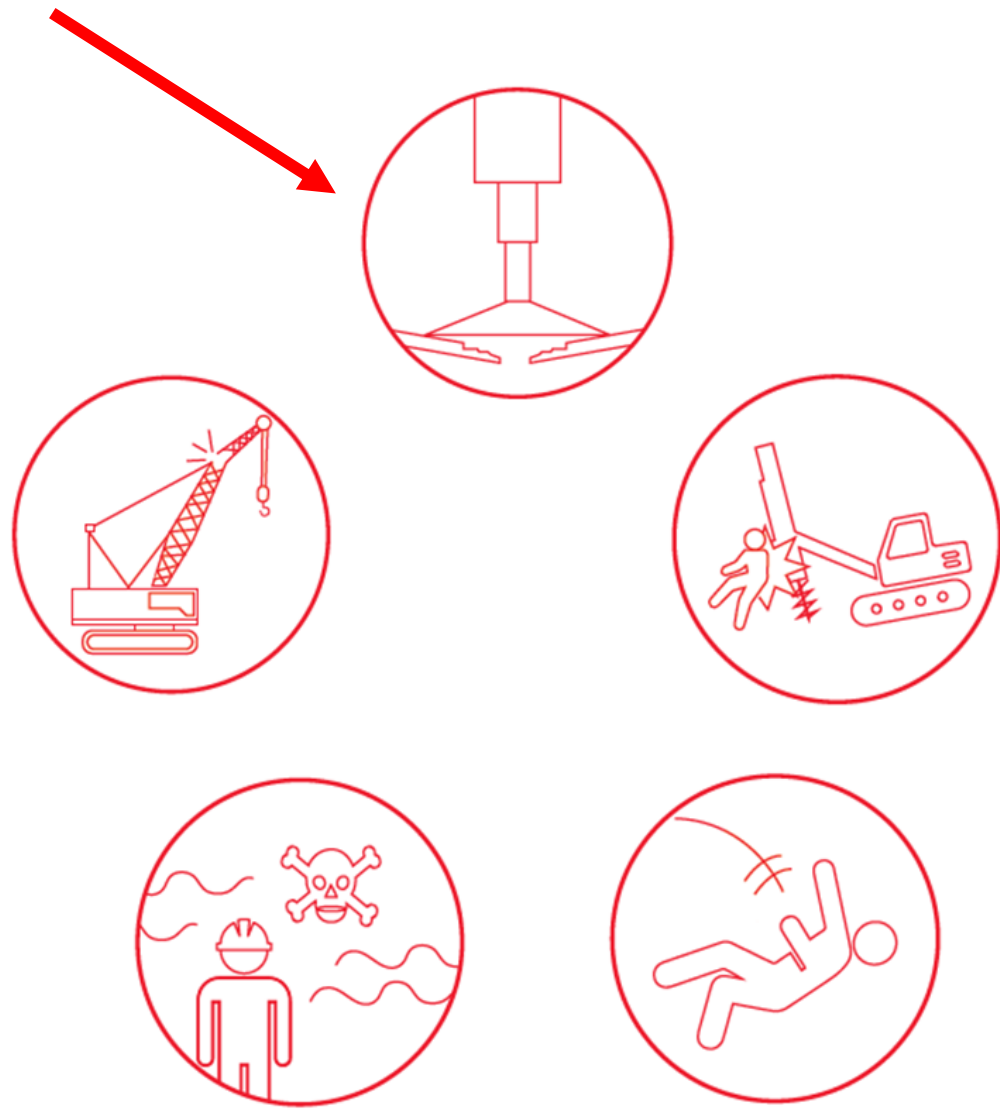
“It is a ground supported platform designed, installed and tested to safely support heavy equipment for the purpose of geotechnical works”

Many near misses and accidents in our industry are related to working platforms. Every incident and every near miss involving the platform is a potential fatality.



Working Platforms

One of our MAJOR RISKS



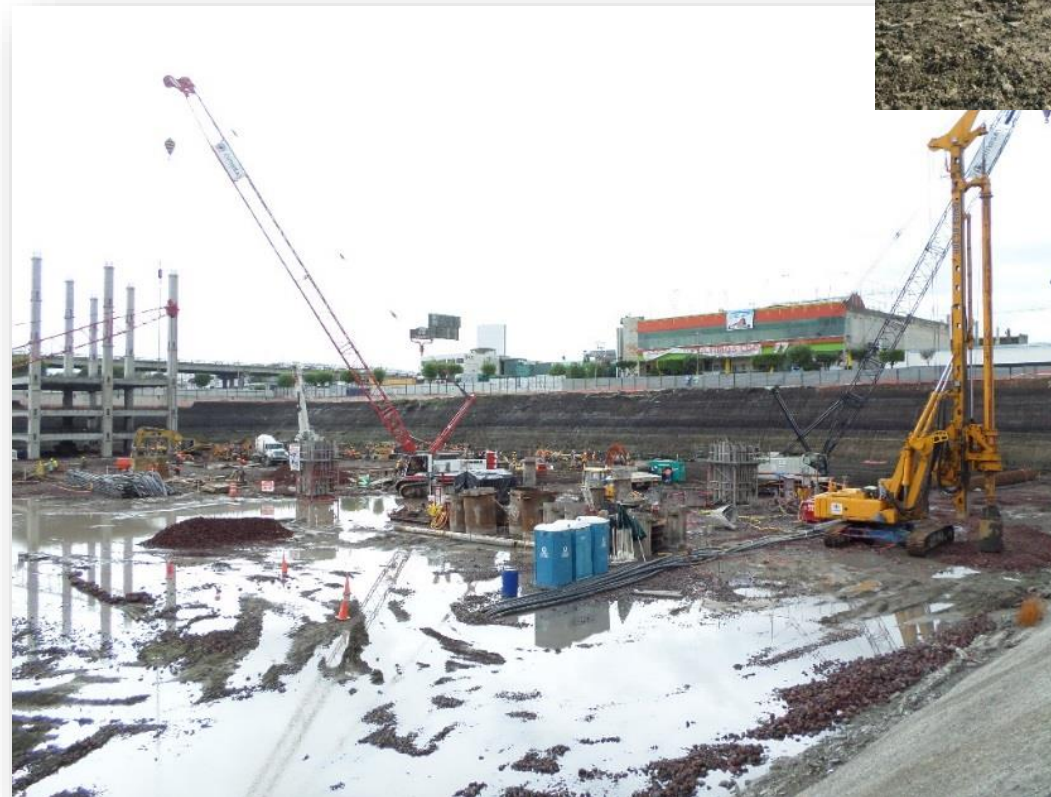
An unsafe working platform is a hazard for:

- Operators and their equipment
- Workers on the jobsite
- Members of the public



Some examples of our risk areas:

- Trenches and pile shafts not properly backfilled
- Flooded working platforms
- Mobilization of rigs/cranes on steep slopes



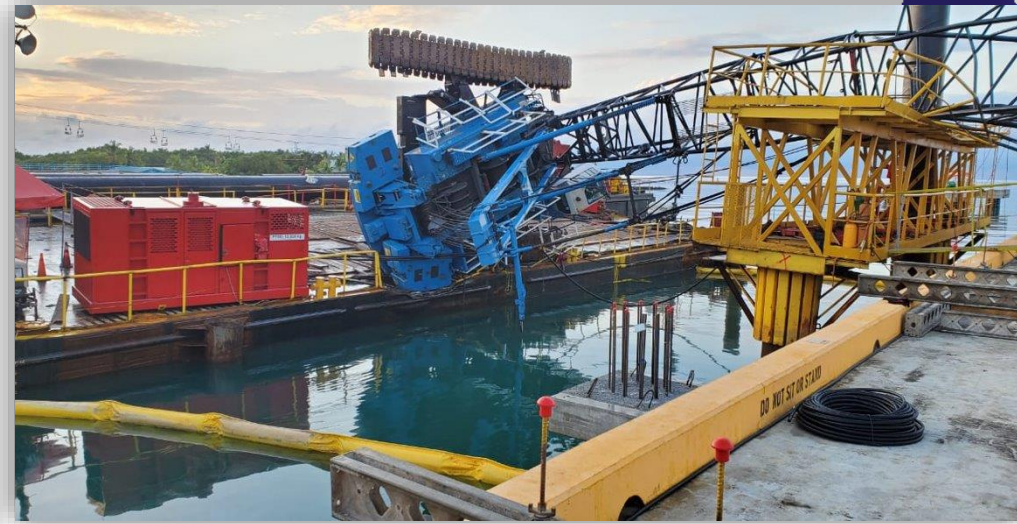
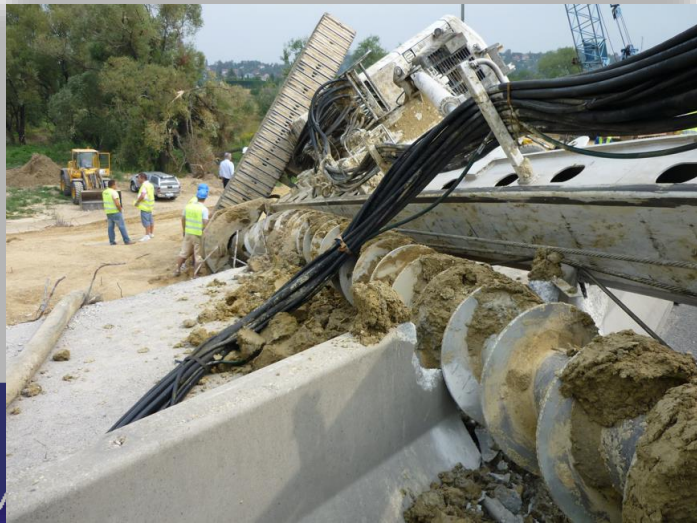
Some examples of our risk areas:

- Unprotected excavations
- Uneven/unleveled ground
- Heavy equipment in congested areas



What creates accidents involving the working platform?

- Lack of adequate platform design for the loads to be supported
- Inadequate construction and leveling of the platform
- Lack of operators training
- Personnel working in the vicinity of reversing/moving plant or equipment



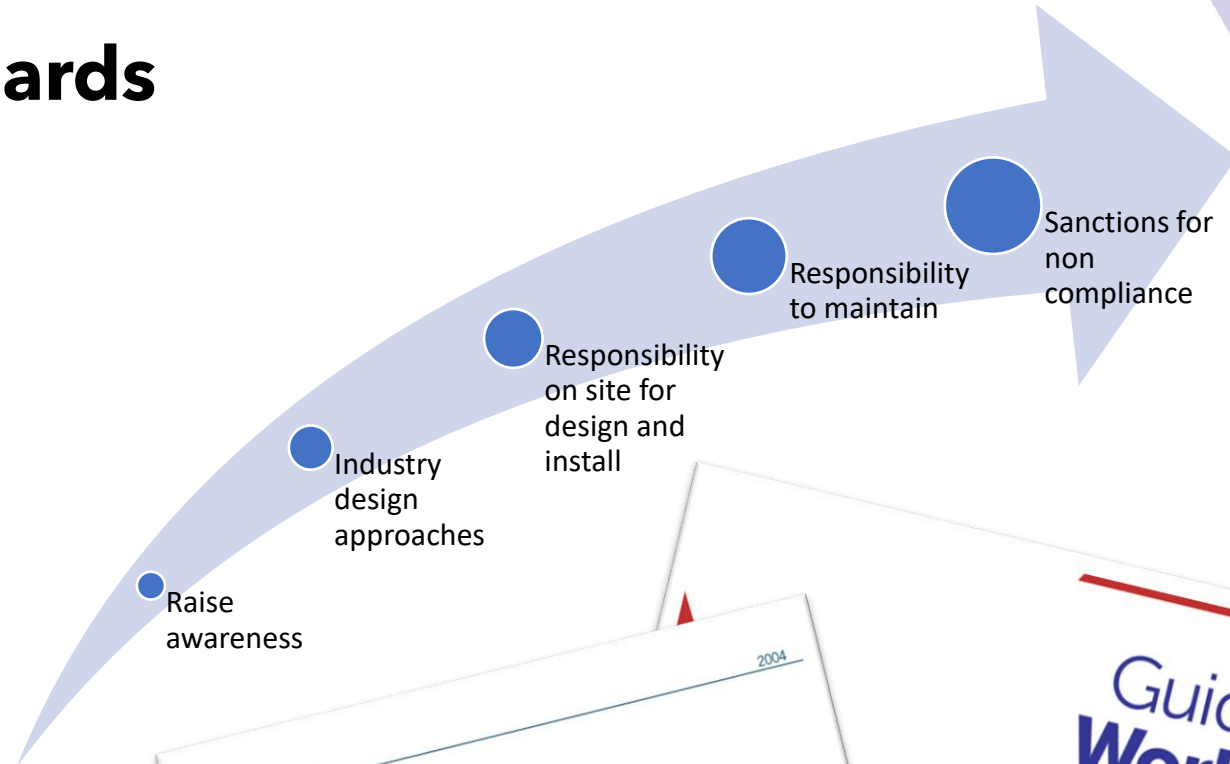
What creates accidents involving the working platform?

- Presence of cavities, geological anomalies and sinkholes



How to control the hazards

- Rig loading
- Platform design
- Installation and testing requirements
- Inspection and maintenance
- Be clear on responsibilities
- Enforcement
- Training and awareness



FEDERATION OF PILING SPECIALISTS
Working Platform Certificate (FPS/WPC/4d)

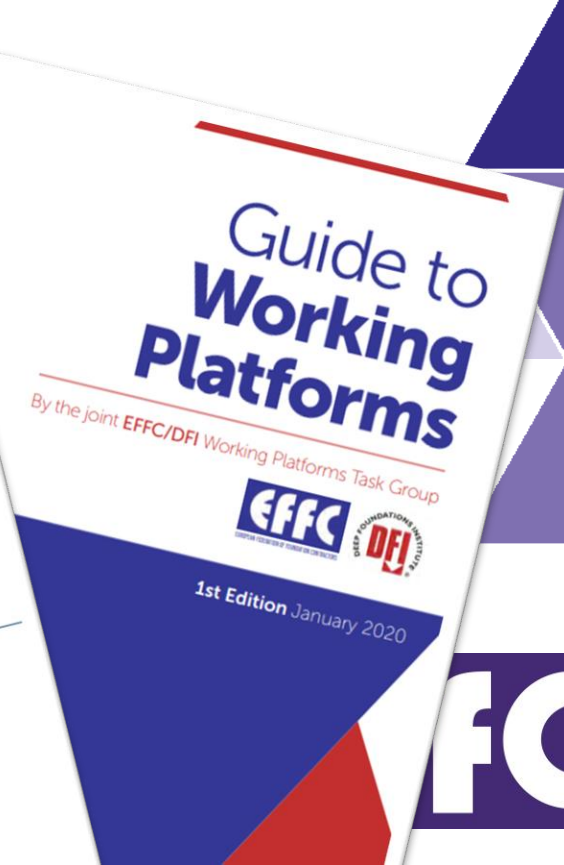
Project Name

Work area covered by certificate

Worked up pile layout drawing may be attached to this certificate. Include haul roads and gridlines.

PLATFORM DESIGN (INCLUDING RAMPS AND ACCESS)

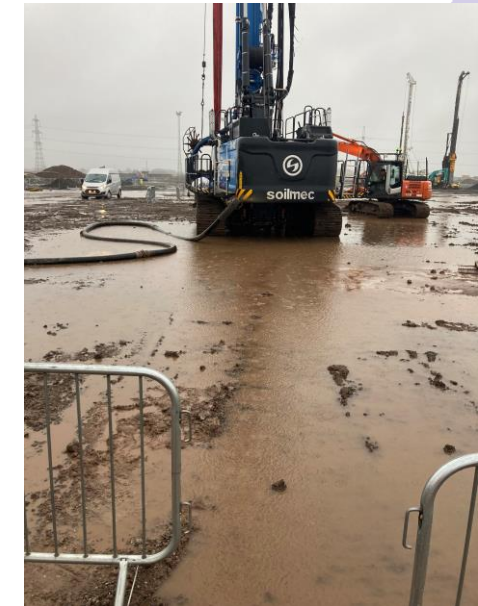
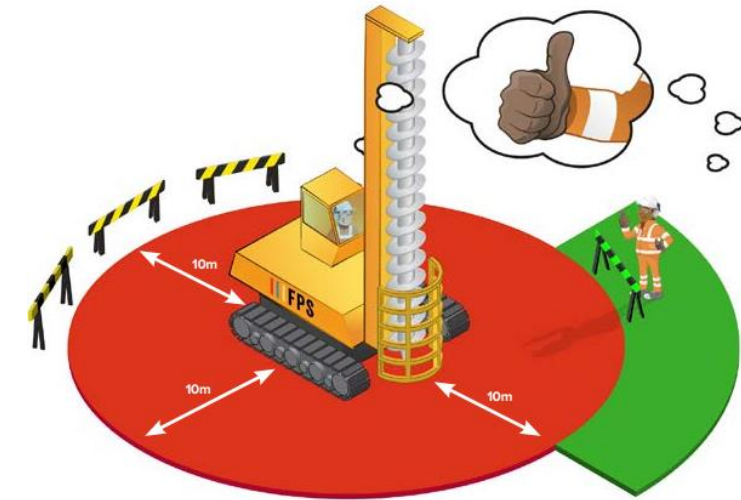
Installation, maintenance and repair of



How to control the hazards

- Education – not an excavator and not a crane
- Establish exclusion zones
- Establish “Stop Work Authority”
- Be vigilant, be aware of the impact of weather, equipment and other activities on site

**CFA/RIGID INCLUSIONS
RESTRICTED ZONE**



How to control the working platform hazards

- Ensure Working Platforms are designed, properly constructed, regularly inspected and maintained for the plant which will use them.
- Protect and backfill any shaft, open hole, trench or excavation
- Ensure the commitment of the main contractor/client in delivering a safe working platform (Working Platform Certificate, where applicable)
- Ensure equipment operators are competent and trained
- Always have a signaller or banksman guiding moving equipment on site and make sure they know the hazards.



How Can I PERSONALLY Prevent accidents?

Plan, ask, speak up!

- **Report immediately** any unsafe condition you see on the jobsite (uneven ground, unsafe slopes, potential for collisions, etc.)
- Take responsibility for my actions and look after my colleagues.
- Never walk behind a revolving or moving equipment or vehicle
- Assist operators during equipment mobilization (signaling)
- Assess the risk before travelling plant over a ramp

Does your platform look like this?

STOP - REPORT - CONTROL





What did you learn?

Quiz....



Links / useful information

- Working platforms for tracked plant – BR 470
- Design of granular working platforms for construction plant - TWF 2019
- Guide to Working Platforms EFFC/DFI 2020
- Working Platform Design Sensitivity – FPS